

ERRATUM

ZUBRZYCKI I.Z. & GÄDE G. 1999: Conformational study on a representative member of the AKH/RPCH neuropeptide family, Emp-AKH, in the presence of SDS micelle. *Eur. J. Entomol.* **96**: 337–340.

Due to a printer's error, Fig. 2 in the above article (p. 339) was printed mirror-reversed. Here we reprint the figure with correct orientation. We apologize for this regrettable error.

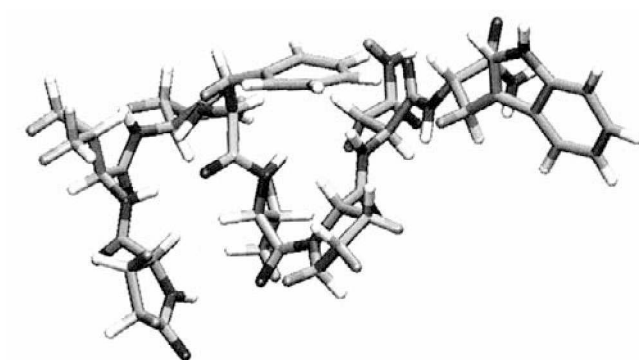


Fig. 2. Lowest energy conformer of Emp-AKH peptide in SDS solution obtained using Restrained Molecular Dynamics Simulation.