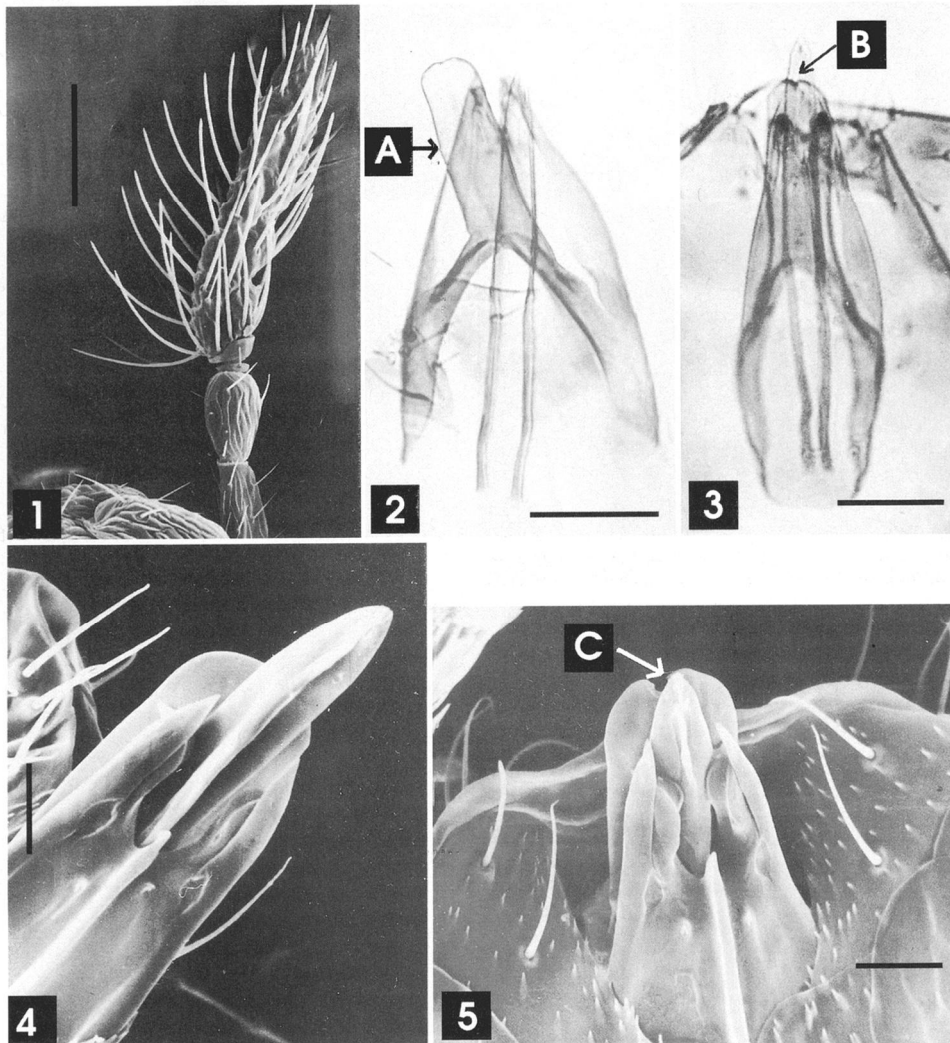


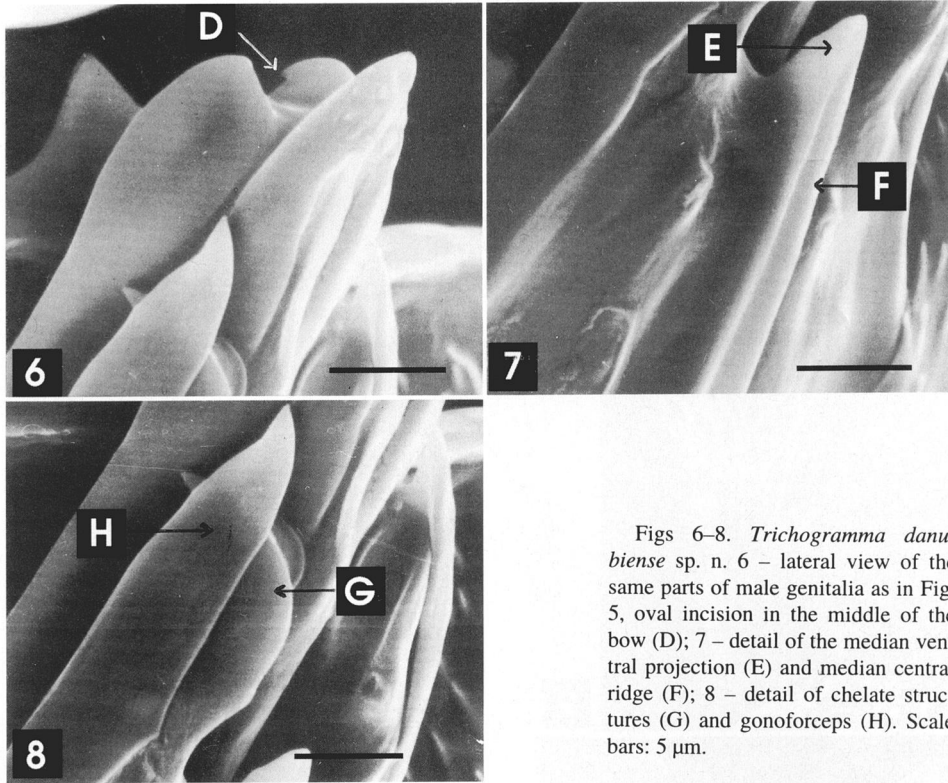
ERRATUM

BÍROVÁ H. & KAZIMÍROVÁ M. 1997: *Trichogramma danubiense* sp. n. (Hymenoptera: Trichogrammatidae), an egg parasitoid of *Macrothylacia rubi* (Lepidoptera: Lasiocampidae), with some data on its bionomics. *Eur. J. Entomol.* **94**: 301–306.

The two photographic plates contained in the above paper lack measurements of scale bars. We reprint the plates below with the corrected legend.



Figs 1–5. *Trichogramma danubiense* sp. n. 1 – male antennal flagellum; 2 – dorsal expansion of gonobase with rounded posterior extremity with straight sides (A); 3 – dorsal expansion of gonobase with an incision (B) in the apex; 4 – ventral view of male genitalia, aedeagus overlapping the apex of the dorsal expansion of gonobase; 5 – ventral view, aedeagus does not overlap the apex of the dorsal expansion of gonobase, incision in the middle of the bow evident (C). Scale bars: 1 – 50  $\mu\text{m}$ ; 2, 3 – 25  $\mu\text{m}$ ; 4, 5 – 10  $\mu\text{m}$ .



Figs 6-8. *Trichogramma danubiense* sp. n. 6 - lateral view of the same parts of male genitalia as in Fig. 5, oval incision in the middle of the bow (D); 7 - detail of the median ventral projection (E) and median central ridge (F); 8 - detail of chelate structures (G) and gonoforceps (H). Scale bars: 5  $\mu$ m.