

Tingidae (Hemiptera) of Vanuatu (New Hebrides): New species and new records

ERIC GUILBERT

Museum National d'Histoire Naturelle, UPRES-A 8043, Laboratoire d'Entomologie, 45 rue Buffon, F-75005 Paris, France;
e-mail: guilbert@mnhn.fr

Key words. Hemiptera, Tingidae, new species, identification key, Vanuatu, New Hebrides

Abstract. Four species new to science are described from Vanuatu, namely *Holophygdon nishidae* sp. n., *Idiocysta vanuatuensis* sp. n., *Nesocypselas minicysta* sp. n., and *Tingis parvoroe* sp. n. New records are provided for six species, five of them being new to Vanuatu: *Cysteochila idonea* Drake, *Stephanitis subfasciata* Horváth, *Teleonemia scrupulosa* Stål, *Tingis chazeaui* Guilbert, and *Tingis irregularis* (Montrouzier). A key to genera and species of Vanuatu is added.

INTRODUCTION

Only two species of Tingidae have been known from Vanuatu (formerly New Hebrides), both belonging to Tinginae: Tingini: *Nesocypselas inannana* Drake, 1953 and *Paracopium summervillei* (Hacker, 1927). *N. inannana* is restricted to Vanuatu but *P. summervillei* is not. Since then, no new species have been added to this fauna. Nine species are added here to the fauna of Vanuatu, from material in the Bishop Museum collection. Four of these species are new to science and five are new to Vanuatu. The fauna of Vanuatu now comprises 11 species, five being endemic (45%). All measurements are in mm.

Abbreviations: BPBM – Bernice P. Bishop Museum, Honolulu; MNHN – Muséum National d'Histoire Naturelle, Paris.

DESCRIPTIONS OF NEW SPECIES

Holophygdon nishidae sp. n.

Description (Figs 1, 2). Entire body brown to yellowish, except tarsi. Body length: 4.09; body width: 1.54; cyst length: 2.34; cyst width: 1.78; cyst height: 1.20.

Head small and spineless. Antennae long and slender, first antennal segment longer than head. Antennal segments measurements: I: 0.55; II: 0.15; III: 0.95; IV: 0.88. Rostrum short, extending onto prosternum. Rostral sulcus almost indistinct and laminae present only on metasternum. Bucculae short and wide, with 4 rows of small areolae. Legs long and slender, second tarsi greatly swollen.

Pronotum not gibbose, punctate, truncated at apex, unicarinate, the median carina slightly elevated, without collar or hood. Paranota reflexed and forming a large subglobular cyst, as large as the body beneath, with many small areolae at base, the areolae larger on the top, the outer margins of the paranota not completely meeting dorsally, with a small medial dehiscence, and then, covering most of pronotum and part of hemelytra.

Hemelytra hyaline, as wide as pronotum. Discoidal area covered by paranota. Subcostal area triseriate, with small areolae. Costal area four to five areolae broad at widest part, areolae large.

Etymology. This species is dedicated to G. Nishida from the Bishop Museum, who kindly provided me the material studied here.

Type material. Holotype ♂ (BPBM), Vanuatu: Banks Isl.: Vanoua Lava Isl.: Sola to Chelva River, 0–250 m, 16.ix.1979; G.M. Nishida, G.A. Samuelson lgt., BPBM Acc. N° 1979.380.

Differential diagnosis. *H. nishidae* sp. n. differs from *H. melanesica* Kirkaldy, 1908, type species of the genus, by the size (body length: 3.54; body width: 1.78; cyst length: 1.84; cyst width: 1.42; cyst height: 1.02; antennal segments measurements: I: 0.46; II: 0.11; III: 6.00; IV: 5.00). *H. nishidae* sp. n. is larger but narrowed. The bucculae of *H. melanesica* have 3 rows of areolae, the areolae larger. The pronotum shows a nearly indistinct median carina, a small collar, short, three areolae broad, while *H. nishidae* sp. n. lacks these. The paranota of *H. melanesica* completely join dorsally. The costal area is four areolae broad at its widest part. *Holophygdon melanesica* var. *fusca* Drake & Poor, 1943 described from Fiji Islands, is similar to *H. melanesica* but has longer antennae, higher cyst and longer hemelytra. The paranota entirely cover the discoidal and part of the subcostal areas as in *H. nishidae* sp. n.

Comments. Contrary to the illustration in Drake & Davis (1960, Fig. 58 on p. 64), and as shown in the illustration accompanying Kirkaldy's (1908, plate IV, Fig 10) original description, the first antennal segment of *H. melanesica* is longer than the head and the paranota meet dorsally for their full length, which was confirmed by measurements of the type material and other specimens.

The genus *Holophygdon* Kirkaldy, 1908 was included in the tribe Litadeini (Drake & Ruhoff, 1965), like the genus *Litadea* China, 1924 due to the swollen second tarsal segment whose concavity beneath is covered with short, bristly hairs, and the greatly abbreviated hind margin of the pronotum. The genus *Aeopelys* Drake & Ruhoff, 1965 was included in the Litadeini, although the abbreviated hind margin could not be observed.

Holophygdon is known only from *H. melanesica* from Fiji Islands and *H. nishidae* sp. n. from Vanuatu.

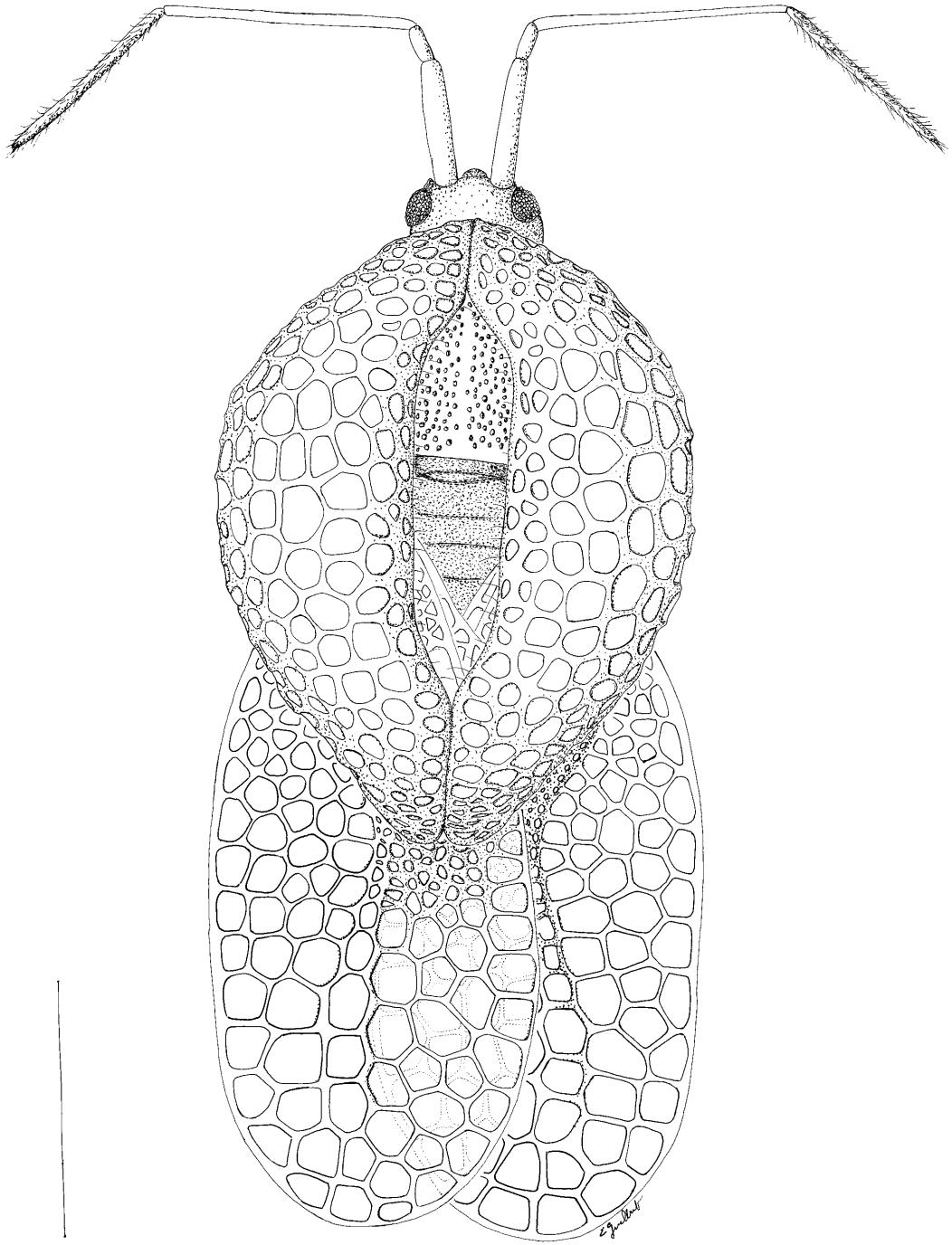


Fig. 1. *Holophygdon nishidae* sp. n., habitus. Scale: 1 mm.

***Idiocysta vanuatuensis* sp. n.**

Description (Figs 3–6). Head, pronotum, and abdomen dark brown to black. Hemelytra brown with yellowish spots at junction of subcostal, discoidal, and sutural areas. Paranota yellowish to clear brown basally and brown dorsally. Legs and antennae yellowish, except last antennal segment and tarsi slightly darker. Body length ♀: 2.95; ♂: 2.59; body width ♀: 0.92; ♂: 0.83.

Head small, spineless. Bucculae small, triseriate, closed in front. Rostrum extending to middle of mesosternum. Rostral channel short, wide, widened onto metasternum, closed behind. Antennae long and slender, fourth segment

slightly pilose (antennal segments measurements: ♀ I: 0.14; II: 0.09; III: 0.69; IV: 0.49; ♂ I: 0.15; II: 0.09; III: 0.80; IV: 0.55). Legs long and slender.

Pronotum punctate, areolate on hind process, tricarinate. The three carinae elevated, with one row of large subquadrate areolae, densely pilose, lateral carinae slightly higher than median carina, latter extending to collar and raised as to form a small tectiform hood.

Hemelytra large and narrow, extending far behind abdomen, divided in the usual areas separated by elevated nervures. Costal area uniseriate, areolae moderately large, subquadrate, bent upwards. Subcostal area uni- to biseri-

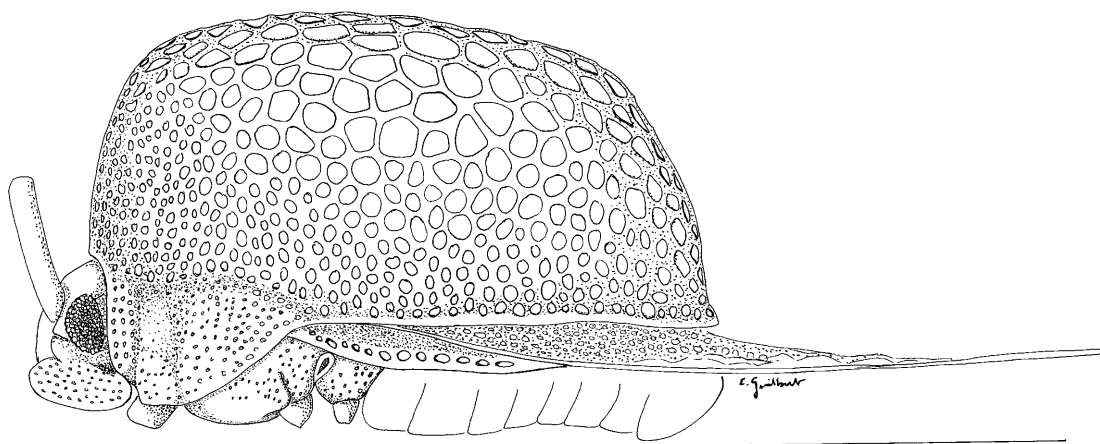


Fig. 2. *Holophygdon nishidae* sp. n., profile. Scale: 1 mm.

ate, areolae small, sharply curved downwards and perpendicular to rest of hemelytra. Discoidal area longer than half the length of hemelytra, four to five areolae broad at widest part, areolae small. Sutural area with large areolae at apex.

Etymology. This species is named for the country from which it is described.

Type material. Holotype ♂ (BPBM), Vanuatu: Tanna Isl.: Lenakel, 0–200 m, i.1981, L.N.H. Krauss lgt., BPBM Acc. N° 1981.131; 2 paratypes 1♀ (MNHN), 1♂ (BPBM), same data as holotype; 1 paratype ♀ (BPBM), Vanuatu: Malekoula Isl. (N): Vao Isl., 0–20 m, 7.ix.1979, W.C. Gagné, G.M. Nishida, G.A. Samuelson lgt., BPBM, Acc. N° 1979.380.

Differential diagnosis. *I. vanuatuensis* sp. n. differs from *I. hackeri* China, 1930, type species of the genus, in the hemelytral areas. The costal area is uniseriate, it is biseriata in *I. hackeri*. The subcostal area is biseriata, the outer row represented by small tiny areolae, the inner row by larger areolae. However, their pronota are very similar. The paranota of *I. vanuatuensis* sp. n. are open above whereas those of *I. bicolor* Drake & Poor, 1943 are closed. The rostrum of *I. vanuatuensis* sp. n. does not extend beyond the mesosternum, whereas in *I. bicolor* it attains the middle of the metasternum. The other characters are very similar (color, hemelytral areas). The rostrum of *I. fijiana* Drake & Poor, 1943 extends to near the base of the mesosternum but its paranota meet above the median carinae of the pronotum. It has the same hemelytral structure as *I. vanuatuensis* sp. n. and *I. dryadis* Drake & Poor, 1943. In *I. floris* Drake & Poor, 1943 the anterior parts of the paranota join dorsally on the pronotum; but the posterior parts of the paranota do not join. In addition, the *I. floris*' costal area is biseriata, whereas in *I. vanuatuensis* sp. n. it is uniseriate. *I. vanuatuensis* sp. n. resembles *I. dryadis* more closely but the rostrum of *I. vanuatuensis* sp. n. is shorter than that of *I. dryadis*. The rest of the body is very similar.

Comments. The female is larger than the male although the male's antennae are larger than the female's. However, these measurements are from only one specimen of each sex. Four species of *Idiocysta* were previously known from Fiji (*I. bicolor*, *I. dryadis*, *I. fijiana* and

I. floris, all described by Drake & Poor) and one species from Samoa (*I. hackeri* China).

***Nesocypselas minicysta* sp. n.**

Description (Figs 7–10). Head and pronotum brown. Hemelytra and paranota hyaline, some veinlets on paranota brown and a brown spot on basal third of hemelytra. Legs and antennae clear, except tarsi dark brown. Body beneath dark brown. Body length: 3.63, body width: 2.52, hood length: 1.62, hood width: 1.40.

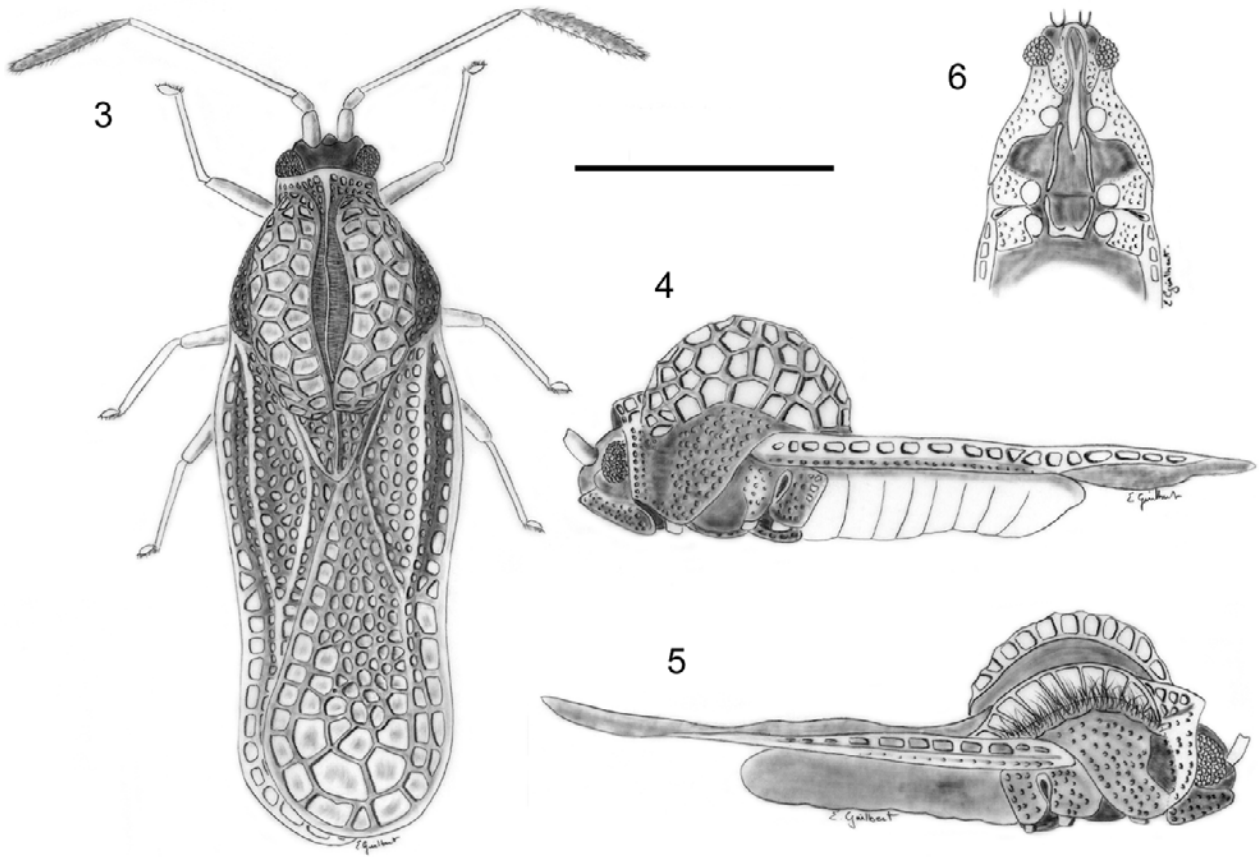
Head small, spineless, without pubescence. Bucculae small, short, open in front. Rostrum short, reaching middle of mesosternum. Rostral channel lacking, ostiolar canal small. Antennae long and slender, all four segments pubescent; antennal segments measurements: I: 0.40; II: 0.16; III: 1.05; IV: 0.85. Legs long and slender.

Pronotum short, wide, tricarinate, not punctate but with a transverse row of large areolae at middle of posterior margin, this is rounded and not extending like a triangular process. Carinae moderately narrow, raised, foliated, without areolae, extending from calli to posterior margin. Collar very short, without hood. Paranota hyaline, large, raised, reflexed, not meeting in front and below, but curved downwards and almost resting on pronotum, partly covering head and lateral carinae, but not covering center of pronotum, made of large areolae, two to three areolae wide at the outer side, the first row made of larger areolae, and one to two areolae wide at inner side, outer margins slightly serrate.

Hemelytra hyaline, much larger than abdomen, sharply widened at base. Costal area bent upwards, wide, six areolae broad at widest part, areolae large. Subcostal area sinuate, bent downwards, biseriata, areolae of inner row large, those of outer row small, some of these divided into very small indistinct areolae. Discoidal area tumid, small, biseriata, inner row with three large areolae, outer row with four smaller areolae. Sutural area biseriata, first areola (at base) largest of entire hemelytron.

Etymology. This species is named for the fact its paranota are less globose than are those of most other *Nesocypselas* species.

Type material. Holotype ♂ (BPBM), Vanuatu: Santo Isl.: 15 km N of Lugan-ville, 100 m, 12.ix.1979; W.C. Gagné lgt.,



Figs 3–6: *Idiocysta vanuatuensis* sp. n. 3 – habitus; 4 – profile; 5 – profile without the paranota to show the median carina; 6 – ventral face. Scale: 1 mm.

BPBM Acc. N° 1979.380; and 1 paratype ♂ (BPBM), Vanuatu: Banks Isl.: Vanoua Lava Isl.: 2 km W Sola, 0–30 m, 17.ix.1979; G.M. Nishida, G.A. Samuelson lgt., BPBM Acc. N° 1979.380, Malaise trap.

Differential diagnosis. *Nesocypsela minicysta* sp. n. differs from *N. dicysta* Kirkaldy, 1908, type species of the genus, by its paranota being less globose. *N. piperica* Drake, 1957, *N. bellatula* Drake, 1960 and *N. ecpalga* Drake & Ruhoff, 1965 also have larger paranota. *N. vicinalis* Drake & Poor, 1943 has a costal area five to six areolae broad like *N. minicysta* sp. n., but a subcostal area uniseriate whereas that of *N. minicysta* sp. n. is mostly biseriate. *N. simulis* Drake & Poor, 1943 has paranota reflexed inwards but their outer margins do not reach the pronotum as to almost rest on it. Its discoidal area is also different, being short and narrow and having at most 4 areolae whereas *N. minicysta* sp. n. has 7 areolae (an outer row of 5 areolae and an inner row of 2 long areolae). In *N. muiri* Drake & Poor, 1943, the rostrum reaches the middle of the metasternum, whereas in *N. minicysta* sp. n. it does not reach the meso-metasternal suture. *N. evansi* Drake, 1953 differs from *N. minicysta* sp. n. in having much larger paranota and wider discoidal area (3 areolae broad); the costal and subcostal areas of these two species are similar. *N. minicysta* sp. n. differs from *N. inannana* Drake, 1953 in the structure and num-

ber of areolae of the paranota and the hemelytra. The paranota of *N. minicysta* sp. n. have fewer areolae, which are larger than in *N. inannana*.

Comments. The genus *Nesocypsela* Kirkaldy, 1908 comprises presently 9 species, all from the Oceanian region. They are known from Fiji Islands, Bismarck Archipelago, New Britain, New Guinea, and Vanuatu Islands.

***Tingis (Tropidocheila) parvoroe* sp. n.**

Description (Figs 11–13). Head brown. Pronotum and hemelytra yellowish to ochraceous with some dark brown spots. Antennae and legs ochraceous, except apical two-thirds of last antennal segment and hind tarsus brown. Body beneath brown. Length: ♂ 2.46; ♀ 2.83; width: ♂ 0.80; ♀ 1.05.

Head small, armed with five erected spines. Bucculae long and narrow, triseriate, areolae tiny. Rostrum reaching hind coxae. Rostral channel straight and narrow, open behind, widened and curved between hind coxae. Antennae long and slender, first segment stout, fourth fusiform, finely pilose. Antennal segments measurements: ♂ I: 0.12; II: 0.11; III: 0.66; IV: 0.25; ♀ I: 0.14; II: 0.14; III: 0.69; IV: 0.29. Legs long and slender.

Pronotum strongly gibbose, punctate, carinate on hind process, tricarinate. Carinae straight, elevated, uniseriate,

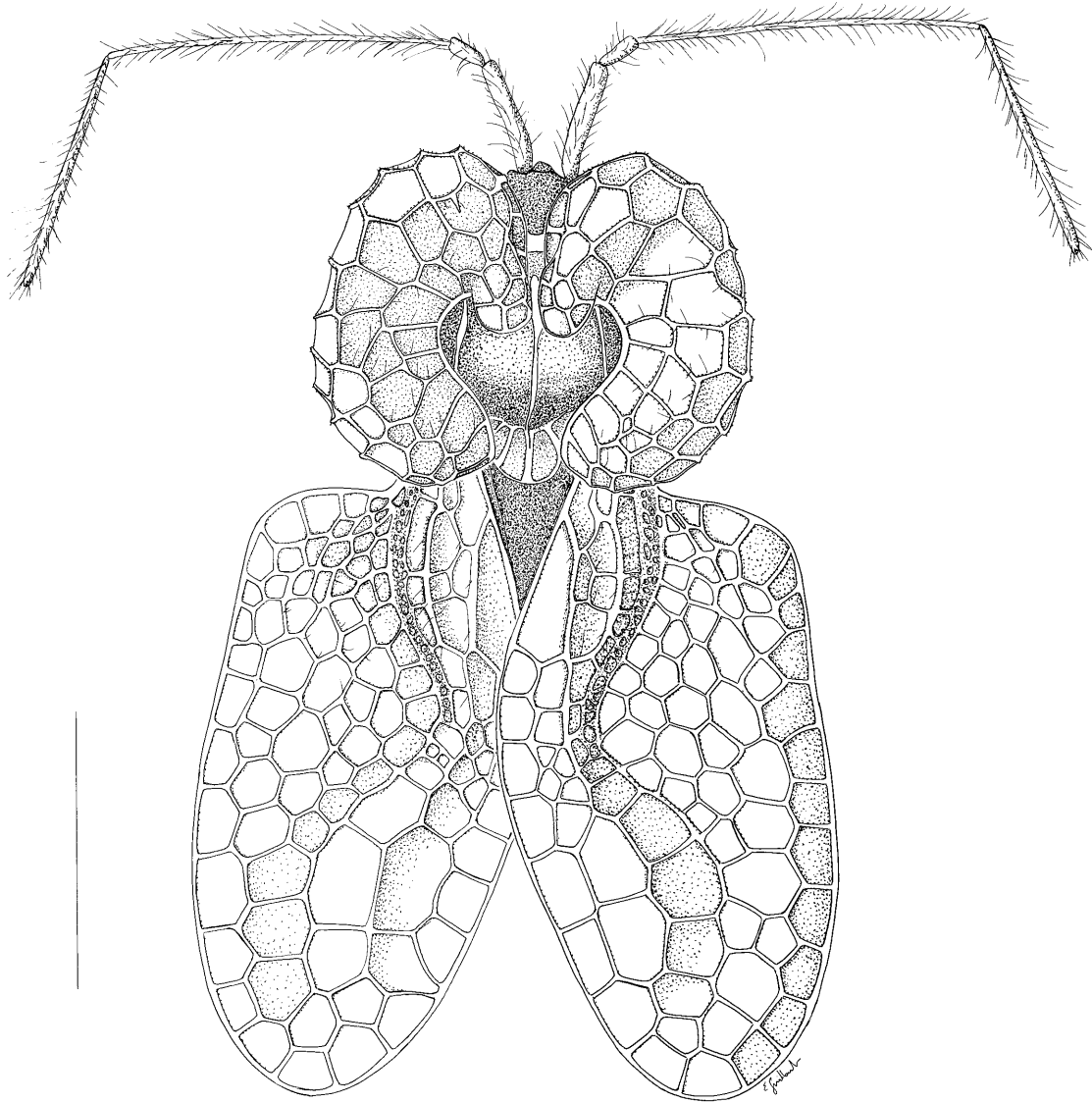


Fig. 7. *Nesocypsela minicysta* sp. n., habitus. Scale: 1 mm.

areolae tiny. Collar narrow, two to three areolae broad, not raised, calli small. Paranota reflexed upwards, narrow, uniseriate, areolae small and smaller behind.

Hemelytra narrow, extending far behind abdomen, principal veins distinct, slightly elevated. Costal area bent upwards, narrow, biseriata, areolae very small. Subcostal area bent downwards, narrow, biseriata, areolae small but slightly larger than those of costal area. Discoidal longer than two-thirds length of hemelytra, six areolae broad at widest part, areolae larger than those of costal and subcostal areas. Sutural area ten to eleven areolae broad, areolae large at apex.

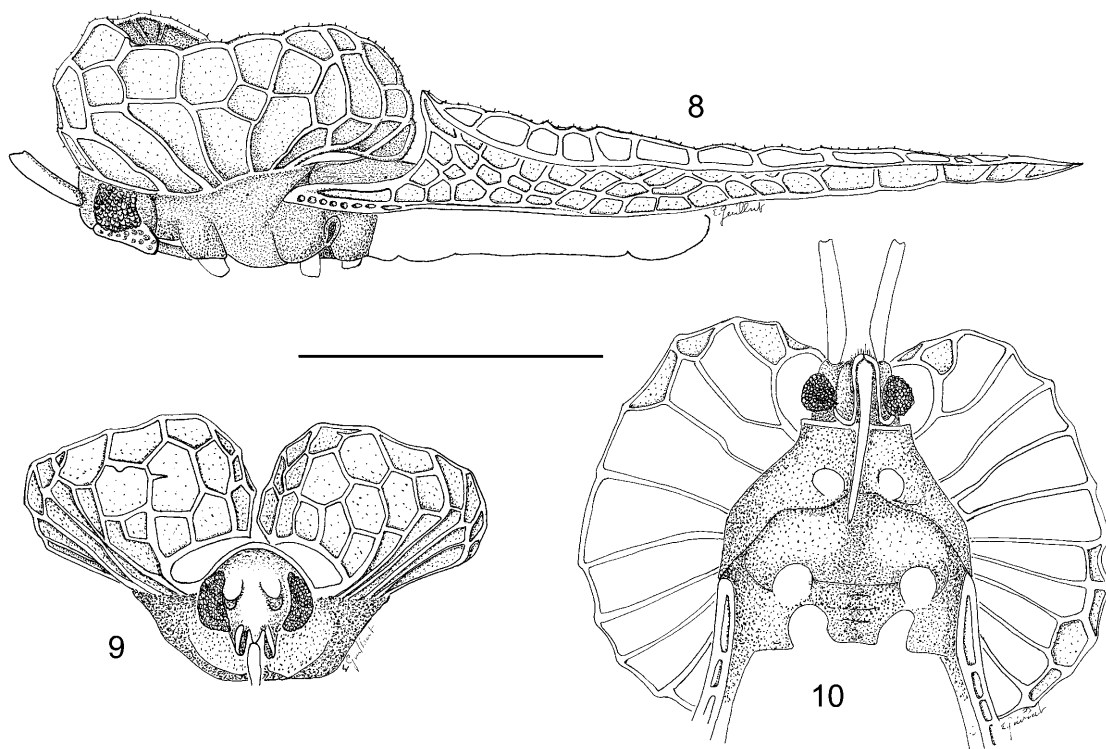
Etymology. This species is named *parvoroe* because of its narrow (parvus: small) costal area (oroe: borders).

Type material. Holotype ♂ (BPBM), Vanuatu: Espiritu Santo I: Luganville, 0–100 m, xii.1983, N.L.H. Krauss lgt., BPBM Acc. N° 1984.168; 3 paratypes: 1♀ (MNHN), 1♀ (BPBM), same data as holotype; 1♀ (BPBM), Vanuatu: Efate I: Vila, 0–100 m, xii.1978, N.L.H. Krauss lgt.

Differential diagnosis. *Tingis parvoroe* sp. n. is very similar to *Tingis teretis* Drake, 1947, *T. muii* Drake, 1947, and *T. irregularis* (Montrouzier, 1861). Their paranota resemble those of *Eritingis* Drake & Ruhoff, 1962 (i.e., narrow and at most uniseriate). However, they have a narrower costal area than does *T. parvoroe* sp. n. *T. teretis* and *T. irregularis* have a uniseriate costal area and *T. muii* has a uni- and biseriata costal area.

Comments. There may be a sexual dimorphism of size. However, the measurements were of only one single specimen of each sex.

Ten species of this cosmopolitan genus have been known from the Austral-Oceanian region. Eight of them belong to the subgenus *Tingis*, two to the subgenus *Tropidocheila*. Nine species are known from Australia (Tasmania included) and one from New Guinea. The two *Tingis* (*Tropidocheila*) species are known only from Queensland.



Figs 8–10: *Nesocypsela minicysta* sp. n. 8 – profile; 9 – frontal face; 10 – ventral face. Scale: 1 mm.

NEW RECORDS

Cysteochila idonea Drake, 1956

New records. 1♂, Vanuatu: Epi Isl.: Lowekewou, 0–100 m, 31.viii.1979, W.C. Gagné, G.M. Nishida, G.A. Samuelson lgt., BPBM Acc. N° 1979.380; 1♂, Vanuatu: Malekula: Lakotoro, 0–200 m, ii.1973, N.L.H. Krauss lgt., BPBM; 2♂, 2♀, Vanuatu: Emae Isl.: Mt Tavani Talimasa, 0–434 m, 30.viii.1979, Forest, W.C. Gagné, G.M. Nishida, G.A. Samuelson lgt., BPBM Acc. N° 1979.380; 2♂, 1♀, Vanuatu: Maewo Isl.: Sounwari: 15°23'S, 168°07'E, 0–400 m, 4.–5.ix.1979, W.C. Gagné lgt., BPBM Acc. N° 1979.380; 1♂, Vanuatu: Maewo Isl.: Sounwari: 15°23'S, 168°07'E, 0–180 m, 4.–5.ix.1979, *Albizzia*, W.C. Gagné lgt., BPBM Acc. N° 1979.380; 1♂, Vanuatu: Maewo Isl.: Kerepei, 0–200 m, xii.1983, N.L.H. Krauss lgt., BPBM Acc. N° 1984.168; 1♂, Vanuatu: Tanna Isl.: 2 km S Ipeukeul, 25 m, 23.viii.1979, on ferns, W.C. Gagné lgt., BPBM Acc. N° 1979.380; 1♀, Vanuatu: Malekoula Isl. (N): Vao Isl., 0–20 m, 7.ix.1979, W.C. Gagné, G.M. Nishida, G.A. Samuelson lgt., BPBM Acc. N° 1979.380; 1♀, Vanuatu: Pentacost Isl.: Batnavni, 0–100 m, 3.ix.1979, W.C. Gagné, G.A. Samuelson lgt., BPBM Acc. N° 1979.380.

Comments. This species has been known from New Guinea, and the Caroline and Solomon Islands. New record for Vanuatu. The specimens from New Guinea, the Caroline Islands, and Vanuatu are slightly different in the form of the paranota and the hemelytral areolae. The specimens from the Solomon Islands and Vanuatu are identical. In addition, the specimens from New Guinea have the rostrum reaching the middle coxae, whereas those of Vanuatu have a slightly shorter rostrum which almost reaches the middle coxae. However, such differences do not justify describing a new species.

Paracopium summervillei (Hacker, 1927)

New records. 6♂, 5♀, Vanuatu: Erromango Isl.: Dillon's bay, 0–100 m, i.1984, N.L.H. Krauss lgt., BPBM Acc. N° 1984.168; 1♂, Vanuatu: Aneityum: Inyeug Islet, 0–5 m, 9.i.1986, N.L.H. Krauss lgt., BPBM Acc. N° 1986.86; 1♀, Vanuatu: Aneityoum Isl.: 0–30 m, xi.1978, N.L.H. Krauss lgt., BPBM.

Comments. *P. summervillei* is also known from Australia and New Caledonia.

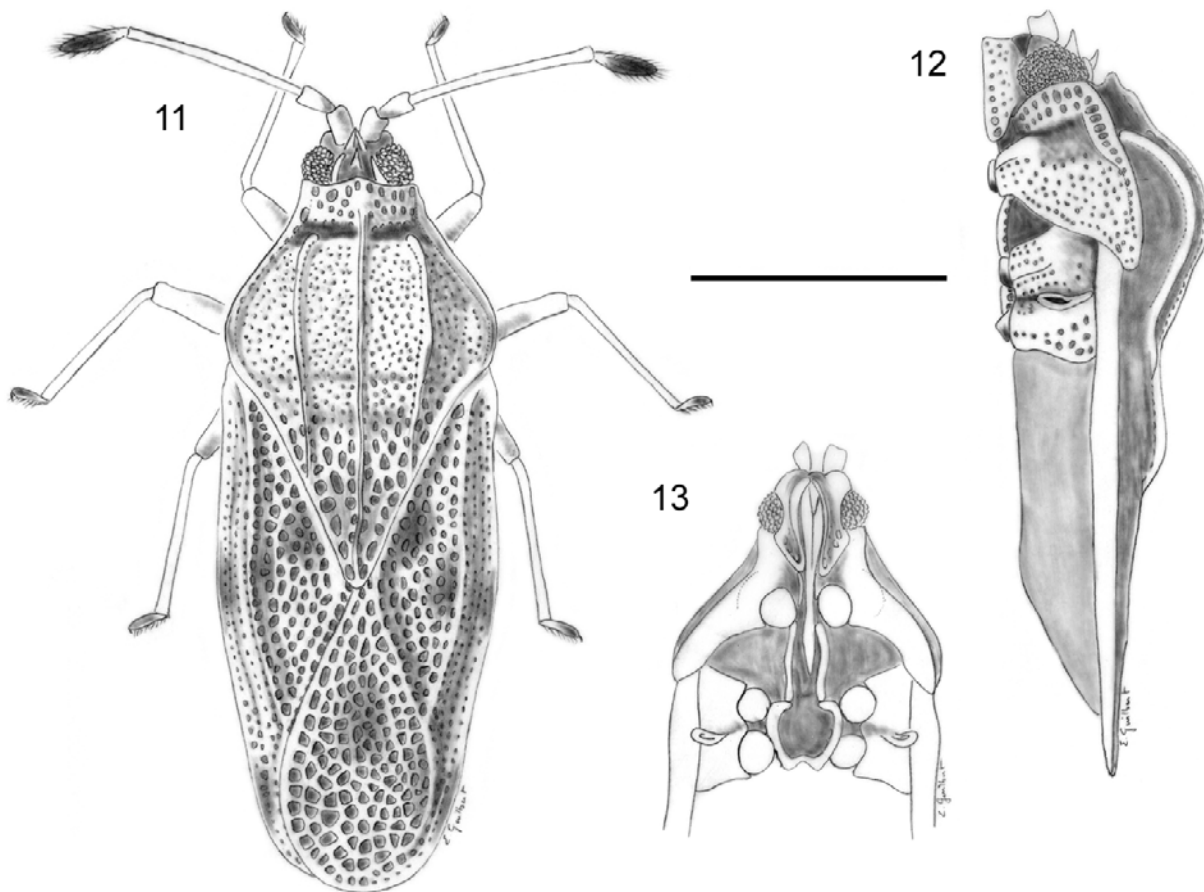
Stephanitis subfaciata Horváth, 1912

New records. 2♂, Vanuatu: Erromango Isl.: Dillon Bay, 0–100 m, i.1984, N.L.H. Krauss lgt., BPBM Acc. N° 1984.168; 1♂, Vanuatu: Erromango Isl.: Dillon Bay, 0–100 m, iii.1978, N.L.H. Krauss lgt., BPBM Acc. N° 1978.465; 3♂, 1♀, Vanuatu: Erromango Isl.: Dillon Bay, 0–100 m, iii.1978, N.L.H. Krauss lgt., BPBM Acc. N° 1978.114; 2♂ and 1♀, Vanuatu: Malekula N. Lakatoro, 22.–30.ix.1967, J. & M. Sedlacek lgt., BPBM; 1♂, Vanuatu: Lakatoro Malekula, 29.ix.1967, J. & M. Sedlacek lgt., BPBM; 1♀, Vanuatu: Malekula: Lakotoro, 0–200 m, ii.1973, N.L.H. Krauss lgt., BPBM.

Comments. *S. subfaciata* is known from China, Taiwan, Burma, India, Palau Islands, Java, and Caroline Islands. A specimen was also collected in New Caledonia. New record for Vanuatu.

Teleonemia scrupulosa Stål, 1873

New records. 1♂, Vanuatu: Efate: Vila, 0–200 m ii.1973, N.L.H. Krauss; 1♂ and 1♀, Vanuatu: Efate: Vila, 0–100 m xii.1983, N.L.H. Krauss lgt., BPBM Acc. N° 1984.168; 1♂, Vanuatu: Efate: Vila, 0–100 m iii.1978, N.L.H. Krauss lgt., BPBM; 1♂, Vanuatu: Efate: Vila, 0–100 m xi.1978, N.L.H. Krauss lgt., BPBM Acc. N° 1979.76; 1♀, Vanuatu: Efate: One-



Figs 11–13: *Tingis (Tropidocheila) parvoroe* sp. n. 11 – habitus; 12 – profile; 13 – ventral face. Scale: 1 mm.

sua, 0–20 m, 19.i.1973, N.L.H. Krauss; 9♂, 10♀, Vanuatu: Efate: Vila, 0–100 m, ii.1970, N.L.H. Krauss lgt. BPBM; 3♂, Vanuatu: Malekula: Lakotoro, ii.1973, N.L.H. Krauss lgt., BPBM; 3♂, 1♀, Vanuatu: Efate: Vila: viii.1950, N.L.H. Krauss; 1♂, 3♀, Vanuatu: Erromango: Dillon's bay, 0–100 m, i.1984, N.L.H. Krauss lgt., BPBM Acc. N° 1984.168; 5♂, 5♀, Vanuatu: Aneityoum: Anelgachat: 0–200 m, xi.1978, N.L.H. Krauss lgt., BPBM.

Comments. *Teleonemia scrupulosa*, the lantana bug, is native to tropical and subtropical America. It was introduced partly for control of *Lantana* in many Pacific and Indian islands as well as in Australia and India. In the Pacific islands it occurs in the Caroline (Ponape), the Solomon Islands, Hawaii, Vanuatu (present record), New Caledonia, Fiji, Tonga, Society Islands, otherwise in South America, USA, southeast Asia, Philippines (Palawan Islands), and Australia.

***Tingis chazeaui* Guilbert, 1997**

New records. 16♀, 11♀, Vanuatu: Efate I: Ulei, 100 m, 23.viii.1979, G.M. Nishida lgt., BPBM Acc. N°1979.380; 1♀, Vanuatu: Efate I: Vila, 0–100 m, xii.1978, N.L.H. Krauss, BPBM.

Comments. Described and previously known only from New Caledonia, this is the first report of this species in Vanuatu.

***Tingis irregularis* (Montrouzier, 1861)**

New records. 1♂, 1♀, Vanuatu: Erromango I: Dillon's bay, 0–100 m, i.1984, N.L.H. Krauss lgt., BPBM Acc. N°1984.168; 1♀, Vanuatu: Malekula N. Lakatoro, 22.–30.ix.1967, J. & M. Sedlacek lgt., BPBM; 1♀, Vanuatu: Pentacost I: Batnavni, 0–10 m, 3.ix.1979, *Acacia simplex*, W.C. Gagné lgt., BPBM, Acc. N°1979.380; 4♂, 1♀, Vanuatu: Emae I: Mt Tavani Talimasa, 0–434 m, *Acacia simplex*, 30.viii.1979, W.C. Gagné lgt., BPBM Acc. N°1979.380; 1♂, 1♀, Vanuatu: Efate I. (NW): Limestone, Plateau N of Maat, 100 m, 18.viii.1957, J.L. Gressitt lgt. BPBM; 1♂, Vanuatu: Epi I: Lowekewou, 0–300 m, 31.viii.1979, W.C. Gagné, G.M. Nishida, J.A. Samuelson lgt., BPBM Acc. N°1979.380; 4♂, 4♀, Vanuatu: Efate I: Ulei, 100 m, 23.viii.1979, G.M. Nishida lgt., BPBM Acc. N°1979.380; 2♂, 1♀ and 1 indet., Vanuatu: Maewo I: Sounwari, 15'23"S, 168'07"E, 0–180 m, 4.–5.ix.1979, *Albizzia*, W.C. Gagné lgt., BPBM Acc. N°1979.380.

Comments. As was true for *T. chazeaui*, this species was described and known only from New Caledonia. This is the first report of this species in Vanuatu.

KEY TO SPECIES OF TINGIDAE OF VANUATU

- 1 Paranota narrow, at most uniseriate 2
- Paranota wide, at least biseriate 3
- 2 Antennae stout and densely pilose 4
- Antennae long and slender 5
- 3 Paranota covering part of the pronotum 7
- Paranota not covering the pronotum
 *Stephanitis subfaciata* Horváth

4	Pronotal carinae slightly raised, head armed with four spines	<i>Paracopium summervillei</i> (Hacker)
—	Pronotal carinae strongly raised, head armed with five spines	<i>Teleonemia scrupulosa</i> Stål
5	Costal area uniseriate	6
—	Costal area biseriate	<i>Tingis parvoroe</i> sp. n.
6	Median cephalic spine present	
—	Median cephalic spine absent	<i>Tingis irregularis</i> (Montrouzier)
7	Paranota reflexed but not resting on the pronotum	8
—	Paranota reflexed as to rest on the pronotum	
8	Paranota narrower than pronotum when seen from above	..	
—	Paranota wider than pronotum when seen from above	...	9
9	Hemelytra not abruptly widened at base	
—	Hemelytra abruptly widened at base	10
10	Inner face of paranota two to three areolae broad	
—	Inner face of paranota five to six areolae broad	
		<i>Nesocypsela minicysta</i> sp. n.
		<i>Nesocypsela inannana</i> Drake

ACKNOWLEDGEMENTS. I am indebted to G. Nishida (BPBM) for the loan of numerous specimens of tingids.

REFERENCES

CHINA W.E. 1924: The Hemiptera-Heteroptera of Rodriguez, together with the description of a new species of Cicada from that island. *Ann. Mag. Nat. Hist. (Ser. 9)* **14**: 427–453.

CHINA W.E. 1930: Heteroptera. In: *Insects of Samoa and Other Samoan Terrestrial Arthropoda. Part II. Hemiptera, Fasc. 3*. British Museum, London, pp. 81–162.

DRAKE C.J. & DAVIS N.T. 1960: The morphology, phylogeny, and higher classification of the family Tingidae, including the description of a new genus and species of the subfamily Vianaidinae (Hemiptera: Heteroptera). *Entomol. Am. (N.S.)* **39**: pp. 1–100.

DRAKE C.J. 1947: Australian Tingidae (Hemiptera). *Bull. Sth. Calif. Acad. Sci.* **46**: 111–121.

DRAKE C.J. 1953: A new genus and new species of Tingidae (Hemiptera). *Proc. Biol. Soc. Wash.* **66**: 221–224.

DRAKE C.J. 1957: A new pepper tingid from New Britain. *Proc. R. Entomol. Soc. Lond.* **26**: 203–205.

DRAKE C.J. 1960: Tingids of New Guinea (Hemiptera). *Pacif. Insects* **2**: 339–380.

DRAKE C.J. & POOR M.E. 1943: Fijian Tingitidae (Hemiptera). *Occ. Pap. Bernice P. Bishop Mus.* **17**: 191–205.

DRAKE C.J. & RUHOFF F.A. 1962: Synonymic notes and descriptions of new Tingidae (Hemiptera). *Studia Entomol.* **5**: 489–506.

DRAKE C.J. & RUHOFF F.A. 1965: Lacebugs from New Guinea, Borneo, Solomons, and other islands of the South Pacific and Indian Oceans (Hemiptera: Tingidae). *Pacif. Insects* **7**: 243–290.

HACKER H. 1927: New Tingitoidea (Hemiptera) in the Queensland Museum. *Mem. Queensland Mus.* **9**: 19–32.

KIRKALDY G.W. 1908: A catalogue of the Hemiptera of Fiji. *Proc. Linn. Soc. N. S. W.* **33**: 345–391.

MONTROUZIER X. 1861: Essai sur la faune entomologique de la Nouvelle-Calédonie (Balde) et des îles des Pins, Art Lifu, etc. *Ann. Soc. Entomol. Fr. (Ser. 4)* **1**: 59–74.

Received December 21, 1998; accepted February 23, 1999